

# PNG Stadium Design Development

September 11, 2007



Port Neches – Groves Independent School District  
PNG Stadium

**SHWGROUP**  
ARCHITECTS | ENGINEERS | PLANNERS



# PROJECT TEAM

## **Port Neches – Groves ISD**

Dr. Lani Randall

Marc Keith

Ken Cummings

Kyle Hooper

Dr. Mary Jane Moore

Frank Wilson

Superintendent

PN-G HS Principal

Groves MS Principal

Port Neches MS Principal

Secondary Curr. Coordinator

Director of Maintenance

## **SHW Group**

Gary Blanton

Jennifer Henrikson

Bill Wadley

Dan Whalen

Ashad Satchu

J. Luis Del Valle

Managing Principal

Principal in Charge

Lead Designer – HS & Stadium

Lead Designer - PNMS

Lead Designer - GMS

Project Manager

## **Consultants**

DBR Engineering Consultants

Brooks & Sparks

Sports Design Group

Millunzi & Associates

MEP Engineers

Civil Engineers

Sports Consultant

Food Service Consultant



**Port Neches – Groves Independent School District**  
**PNG Stadium**

**SHWGROUP**  
ARCHITECTS | ENGINEERS | PLANNERS

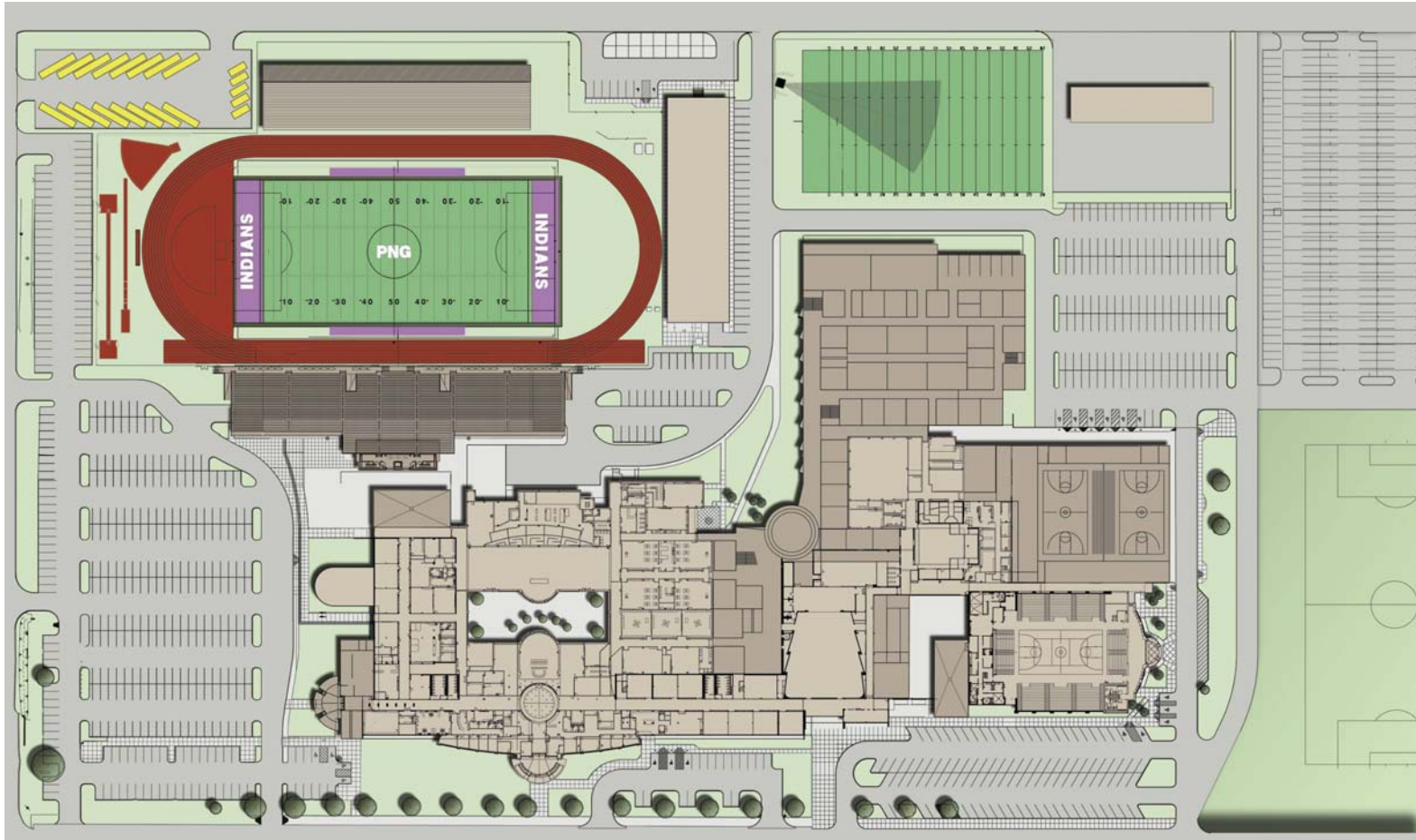


# Design Progress Status - Stadium

- Stadium Renovations
  - Completed Onsite Design though DD
    - Great involvement and input from PN-G staff
      - Board of Trustees
      - Administrators
      - Coaches, Teachers, Volunteers
  - Looking for approval for DD
    - Next step will be to continue to develop the contract documents
      - Drawings
      - Specifications



# PN-G Stadium Renovations



MASTER SITE PLAN  
AFTER COMPLETION OF HIGH SCHOOL PHASE 2



**Port Neches – Groves Independent School District**  
**PNG Stadium**

**SHWGROUP**  
ARCHITECTS | ENGINEERS | PLANNERS





# PN-G Stadium Renovations



ENLARGED SITE PLAN

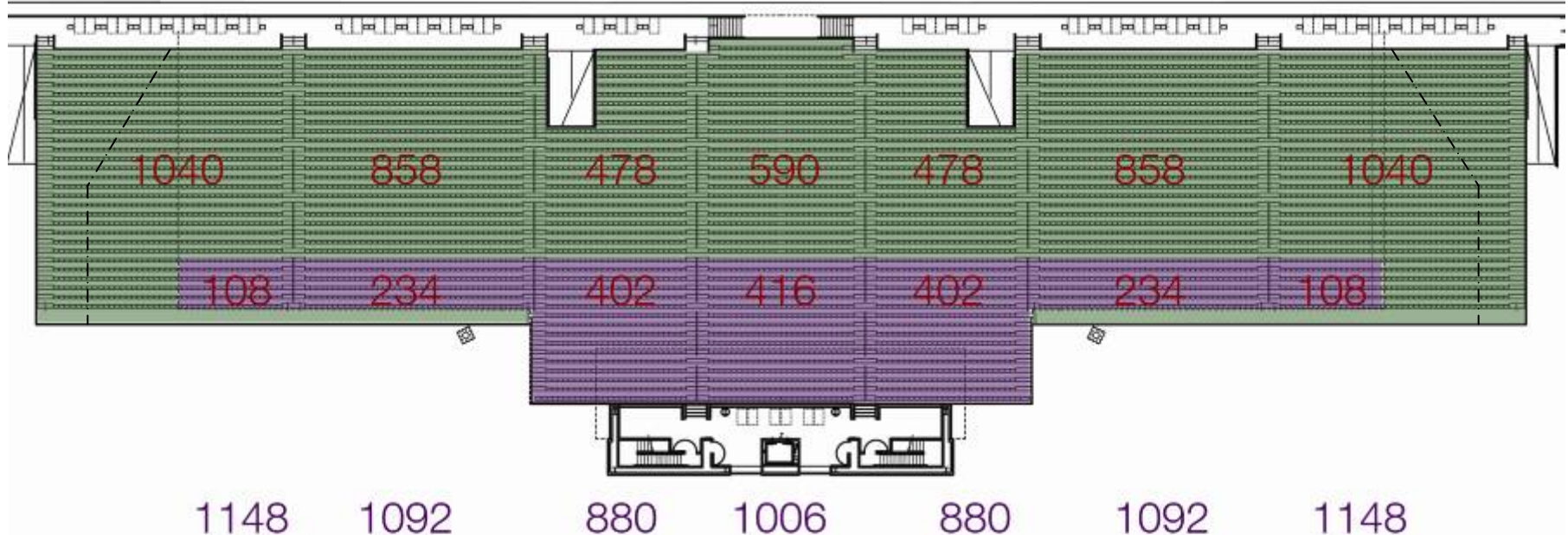


**Port Neches – Groves Independent School District**  
**PNG Stadium**

**SHWGROUP**  
ARCHITECTS | ENGINEERS | PLANNERS



# PN-G Stadium Renovations



Existing Home Stands: 6728  
 Existing Endzone Stands: 500  
 Existing Home Stands Total: 7228

New Home Stands: 7246  
 Endzone Stands: 0  
 New Home Stands Total: 7246

## HOME SIDE – SEATING COUNTS



Port Neches – Groves Independent School District  
 PNG Stadium

SHWGROUP  
 ARCHITECTS | ENGINEERS | PLANNERS



# PN-G Stadium Renovations

Port-Neches Groves ISD  
HS Stadium Upgrades

Design Development  
Seating Analysis

Football Seats **Existing Configuration (2'-4" + 2'-2")**

Section	Category	Seats	Remarks
<u>Home Side</u>			
Section A	Students	608	
Section B	Band/Indianettes	1,192	
Section C	Reserved	1,574	(Primary)
Section D	Reserved	1,574	(Primary)
Section E	Reserved	1,192	(Secondary)
Section F	General Admission	588	
<b>Home Side Total</b>		<b>6,728</b>	
HC + Companion Seats		0	
<b>Home Side Grand Total</b>		<b>6,728</b>	
<u>Visitor Side</u>			
Section G	Reserved	912	(Every other year)
Section H	Reserved	703	(Every other year)
Section I	V-Reserved	748	
Section J	V-Reserved	754	
Section K	V-GenAdm/Band/DT	754	
Section L	V-Students	912	
<b>Visitor Side Total</b>		<b>4,783</b>	
<u>End Zone</u>			
			(1088 student seats = 500 adult seats)
ES/MS	Students	500	
<b>End Zone Total</b>		<b>500</b>	
<b>Grand Total</b>		<b>12,011</b>	(Does not include HC seats)

Football Seats **New Configuration (All 2'-4")**

Section	Category	Seats	Remarks
<u>Home Side</u>			
Section A	Students	1,148	
Section B	Band/Indianettes	1,092	
Section C	Reserved	880	(Primary)
Section D	Reserved	1,006	(Primary)
Section E	Reserved	880	(Secondary)
Section F	General Admission	1,092	
Section G	General Admission	1,148	
<b>Home Side Total</b>		<b>7,246</b>	
HC + Companion Seats		108	
<b>Home Side Grand Total</b>		<b>7,354</b>	
<u>Visitor Side</u>			
Section G	Reserved	912	(Every other year)
Section H	Reserved	703	(Every other year)
Section I	V-Reserved	748	
Section J	V-Reserved	754	
Section K	V-GenAdm/Band/DT	754	
Section L	V-Students	912	
<b>Visitor Side Total</b>		<b>4,783</b>	
<u>End Zone</u>			
ES/MS	Students	0	Field Events
<b>End Zone Total</b>		<b>0</b>	
<b>Grand Total</b>		<b>12,137</b>	
<b>Total Seating Gain:</b>		<b>126</b>	Includes HC + Companion

## SEATING COUNTS



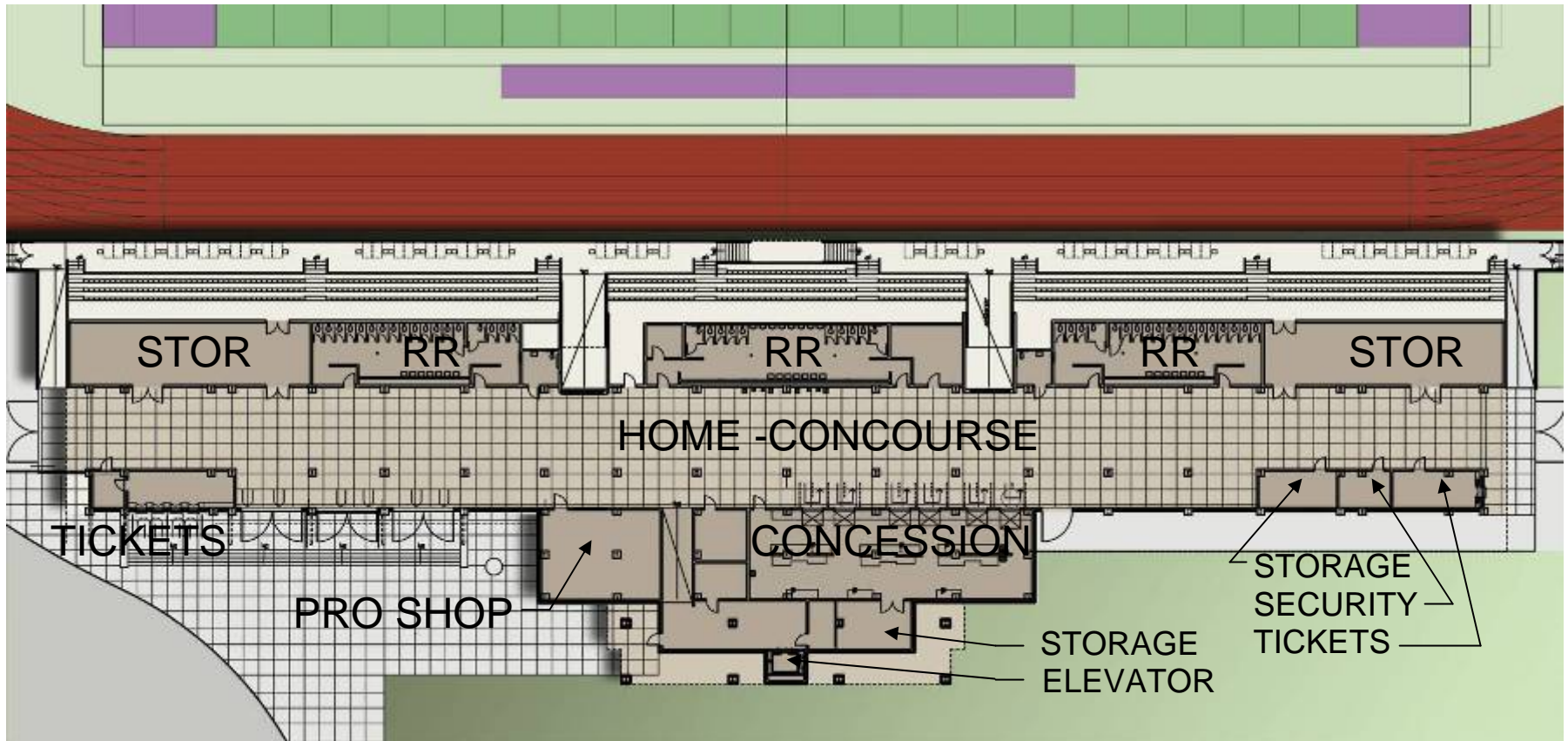
Port Neches – Groves Independent School District  
PNG Stadium

**SHWGROUP**  
ARCHITECTS | ENGINEERS | PLANNERS





# PN-G Stadium Renovations



GROUND FLOOR - HOME SIDE CONCOURSE



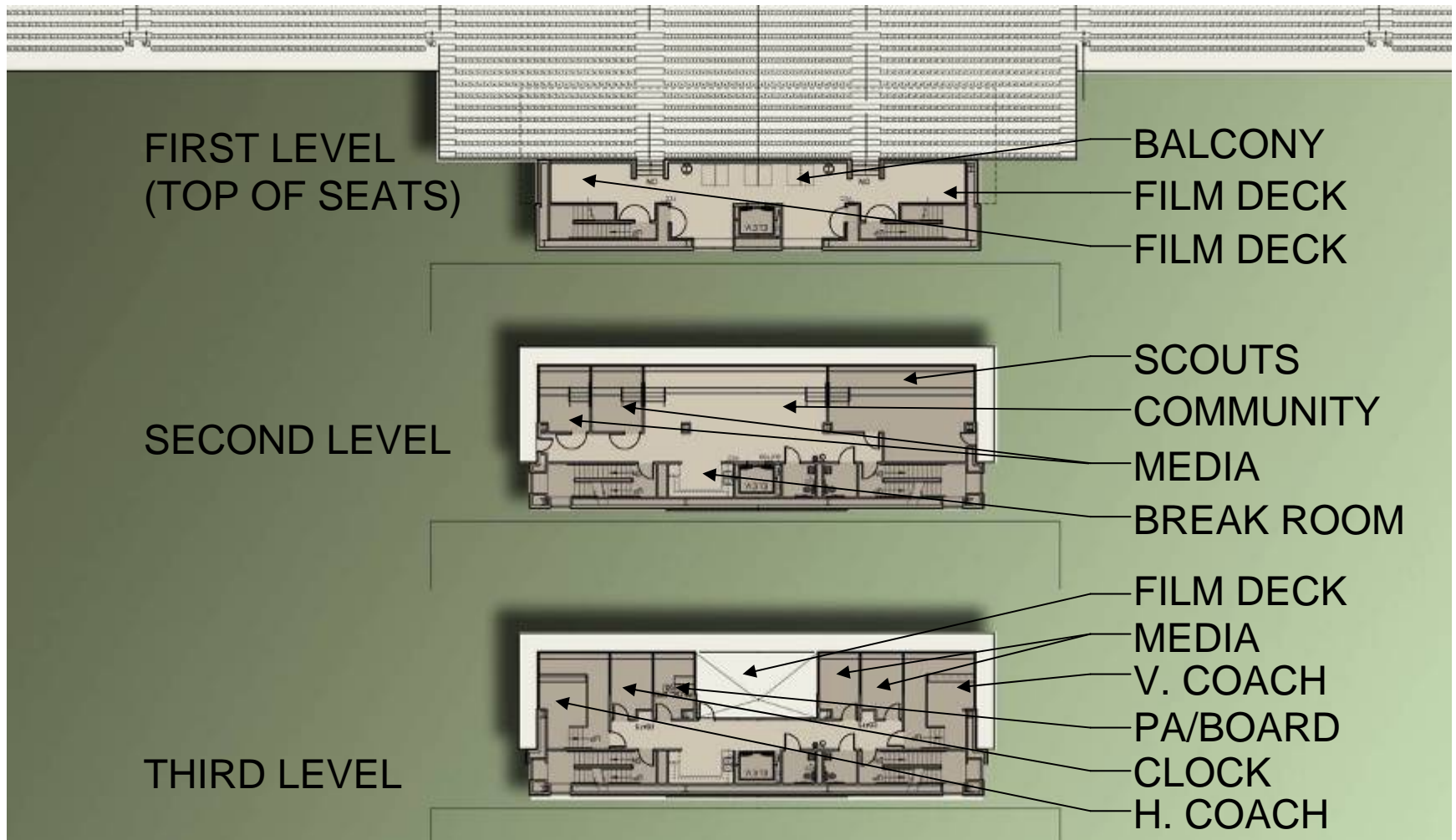
Port Neches – Groves Independent School District  
PNG Stadium

**SHWGROUP**  
ARCHITECTS | ENGINEERS | PLANNERS





# PN-G Stadium Renovations



HOME SIDE – PRESS BOX

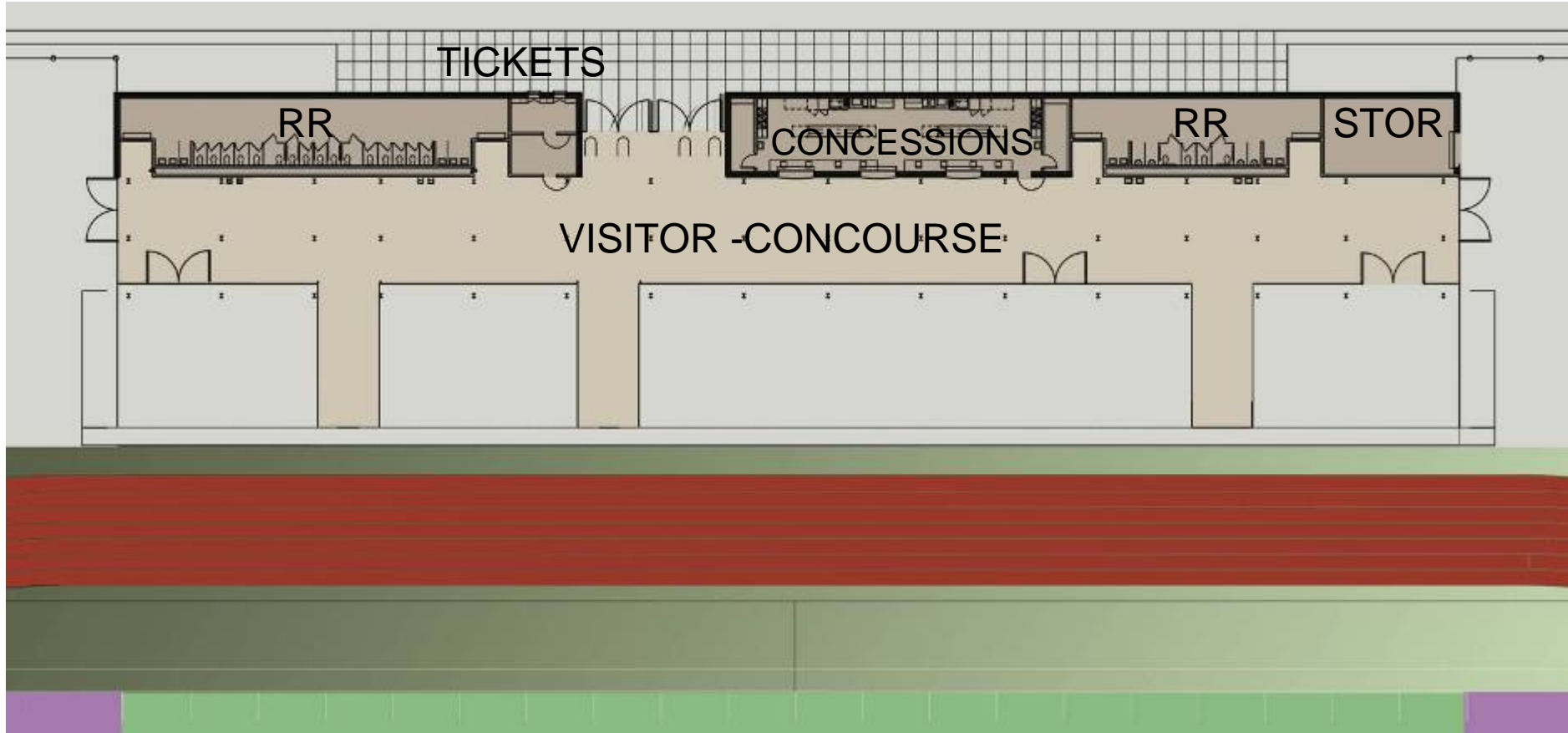


**Port Neches – Groves Independent School District**  
**PNG Stadium**

**SHWGROUP**  
ARCHITECTS | ENGINEERS | PLANNERS



# PN-G Stadium Renovations



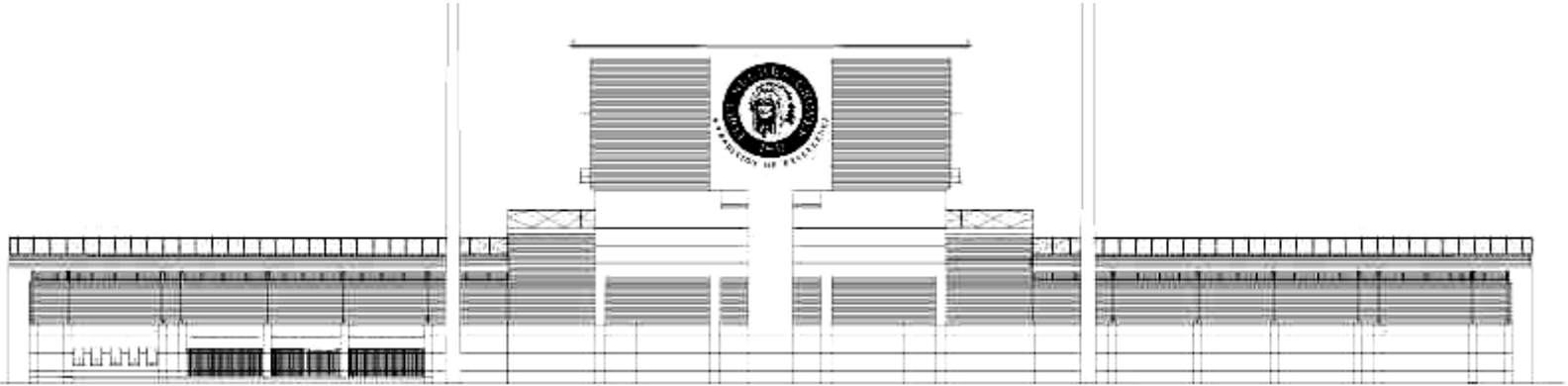
VISITOR SIDE



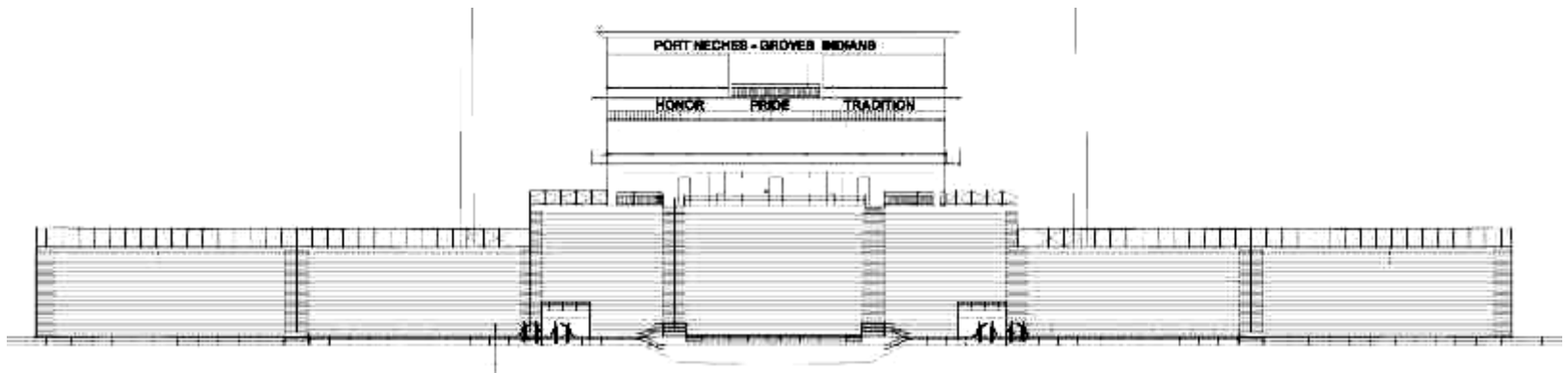
**Port Neches – Groves Independent School District**  
**PNG Stadium**



# PN-G Stadium Renovations



OUTSIDE ELEVATION



INSIDE ELEVATION



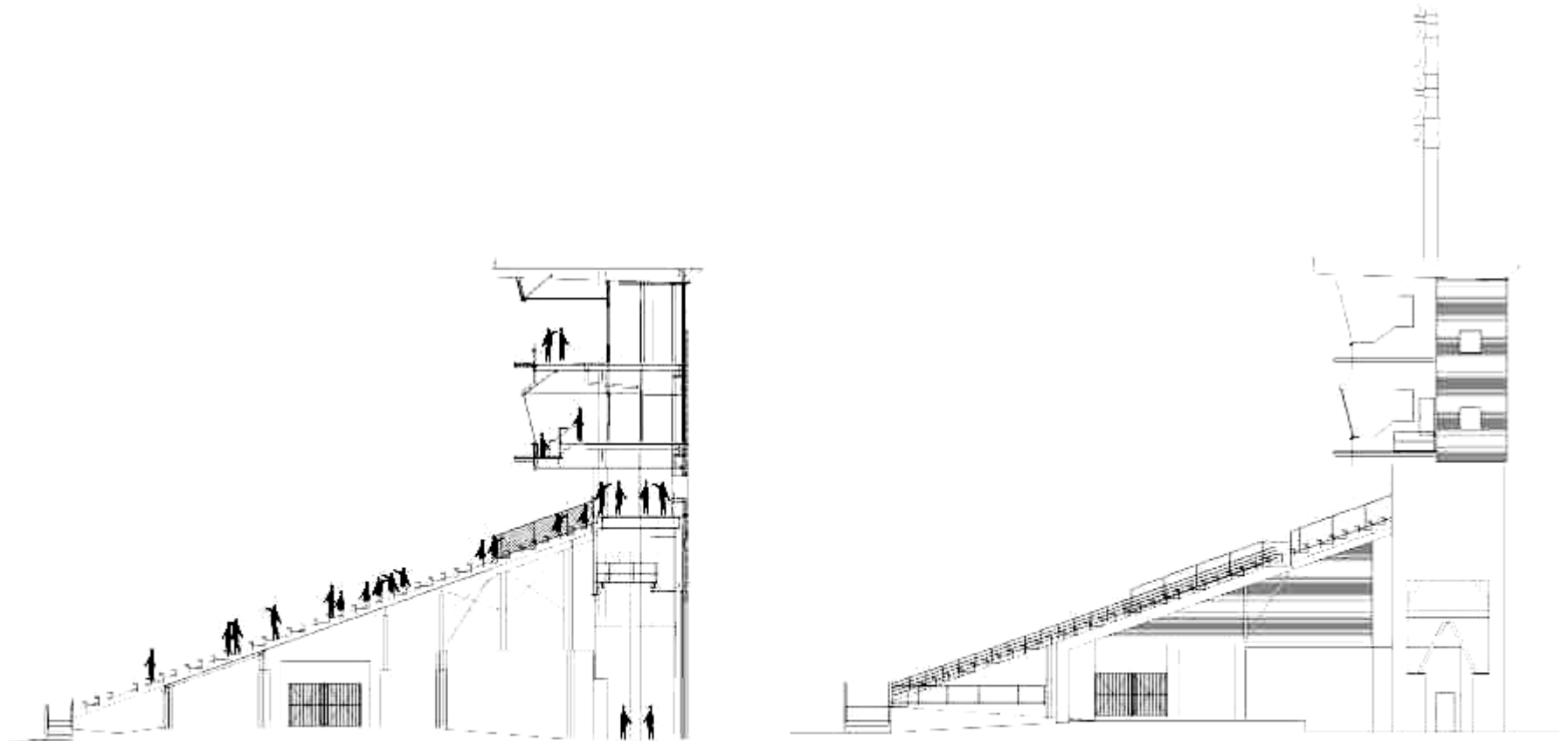
**Port Neches – Groves Independent School District**  
**PNG Stadium**

**SHWGROUP**  
ARCHITECTS | ENGINEERS | PLANNERS





# PN-G Stadium Renovations



## SECTIONS



**Port Neches – Groves Independent School District**  
**PNG Stadium**

**SHWGROUP**  
ARCHITECTS | ENGINEERS | PLANNERS



# PN-G Stadium Renovations



VIEW RENDERINGS

**Port Neches – Groves Independent School District**  
**PNG Stadium**



**SHWGROUP**  
ARCHITECTS | ENGINEERS | PLANNERS



# PN-G Stadium Renovations



VIEW RENDERINGS



**Port Neches – Groves Independent School District**  
**PNG Stadium**

**SHWGROUP**  
ARCHITECTS | ENGINEERS | PLANNERS





# PN-G Stadium Renovations



VIEW RENDERINGS

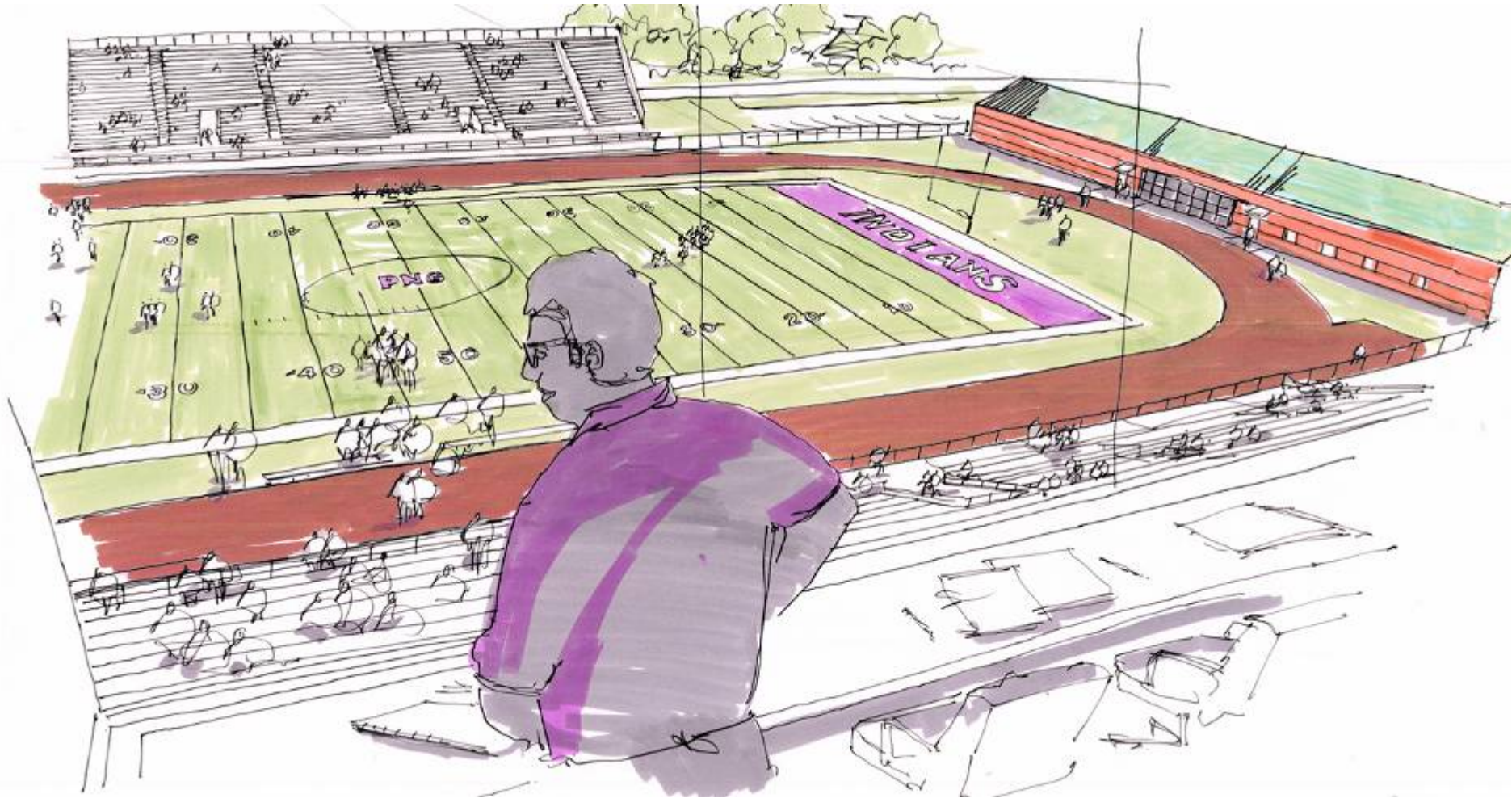


**Port Neches – Groves Independent School District**  
**PNG Stadium**

**SHWGROUP**  
ARCHITECTS | ENGINEERS | PLANNERS



# PN-G Stadium Renovations



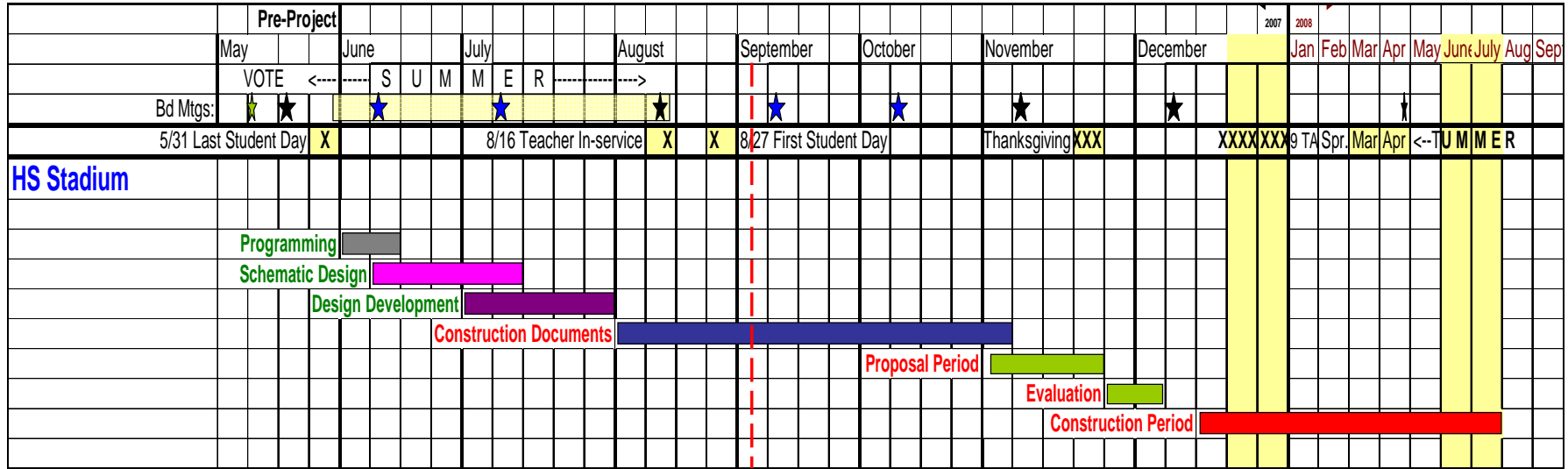
VIEW RENDERINGS

**Port Neches – Groves Independent School District**  
**PNG Stadium**

**SHWGROUP**  
ARCHITECTS | ENGINEERS | PLANNERS



# Project Schedule



- Projects remains on schedule!



Port Neches – Groves Independent School District  
PNG Stadium

SHWGROUP  
ARCHITECTS | ENGINEERS | PLANNERS





# Budget

- Scope has been maintained as originally planned
- Estimates of probable cost will continue to develop in more detail as the design develops in more detail



# Estimate of Probable Cost

**Port Neches - Groves Stadium Renovations**  
**Port Neches - Groves Independent School District**  
 SHW Job No. 4407.026.00

Design Development Estimate of Probable Cost

Stadium Renovations  
 Revised 9/11/2007

Function	BOND AREAS		DESIGN DEVELOPMENT REVISED 9/11/07		Worst Case		Most Likely Case Based on Bond Costs		Best Case		Remarks
	Total SF		Total SF		\$/SF	Calculated Project Cost	\$/SF	Calculated Project Cost	\$/SF	Calculated Project Cost	
<b>Site Work</b>											
New Service Drive	15,000		15,000		\$10	\$150,000	\$8	\$120,000	\$5	\$75,000	
Parking/ Drive Modifications	47,500		47,500		\$20	\$950,000	\$15	\$712,500	\$10	\$475,000	
Demo and Rework (Existing buildings, track, field, stands)	155,546		155,536		\$5	\$777,680	\$3	\$466,608	\$2	\$311,072	
<b>Subtotal</b>	<b>218,046</b>		<b>218,036</b>			<b>\$1,877,680</b>		<b>\$1,299,108</b>		<b>\$861,072</b>	
<b>New Construction</b>											
Press Box (all Levels)	10,500		7,667		\$220	\$1,686,740	\$200	\$1,533,400	\$180	\$1,380,060	
Home side construction (Concession, RRs, tickets)	10,000		8,831		\$165	\$1,457,115	\$150	\$1,324,650	\$135	\$1,192,185	
Visitor side construction (Concession, RRs, tickets)	4,120		5,198		\$165	\$857,670	\$150	\$779,700	\$135	\$701,730	
Stadium Skirting (home @ visitor)	22,675		22,675		\$55	\$1,247,125	\$45	\$1,020,375	\$40	\$907,000	
Home Bleachers (new seats)	5,668		5,334		\$275	\$1,466,850	\$250	\$1,333,500	\$225	\$1,200,150	
Visitor Bleacher Re-work for Accessibility	140		140		\$220	\$30,800	\$200	\$28,000	\$180	\$25,200	
<b>Subtotal</b>	<b>53,103</b>		<b>49,845</b>			<b>\$6,746,300</b>		<b>\$6,019,625</b>		<b>\$5,406,325</b>	
<b>Field Work</b>											
Synthetic Football Field	1 Lot 800,000		1 Lot 800,000		1.1	\$880,000	1	\$800,000	0.9	\$720,000	
New Track	1 Lot 525,000		1 Lot 525,000		1.1	\$577,500	1	\$525,000	0.9	\$472,500	
<b>Subtotal</b>	<b>1,325,000</b>		<b>1,325,000</b>			<b>\$1,457,500</b>		<b>\$1,325,000</b>		<b>\$1,192,500</b>	
<b>Total Project</b>						<b>\$10,081,480</b>		<b>\$8,643,733</b>		<b>\$7,459,897</b>	
					Budget	\$9,005,623	Budget	\$9,005,623	Budget	\$9,005,623	
					Delta	(\$1,075,857)	Delta	\$361,890	Delta	\$1,545,726	



**Port Neches – Groves Independent School District**  
**PNG Stadium**

**SHWGROUP**  
 ARCHITECTS | ENGINEERS | PLANNERS



# Conclusion

- PN-G continues to be a pleasure to work with
- We appreciate your involvement and passion
- Looking for approval for DD
  - Next step will be to continue to develop the contract documents

- Drawings

- Specifications

**Port Neches – Groves Independent School District**  
**PNG Stadium**





